

Bitdisk N5 Series User Guide

First time configuration - quick start

1: Power on the motherboard first. Either typec or dc is acceptable, choose one of the two, cannot be inserted at the same time.

(If typec power supply is used, the frequency can only be set to: 220. Too high a frequency will burn the cable or charger)

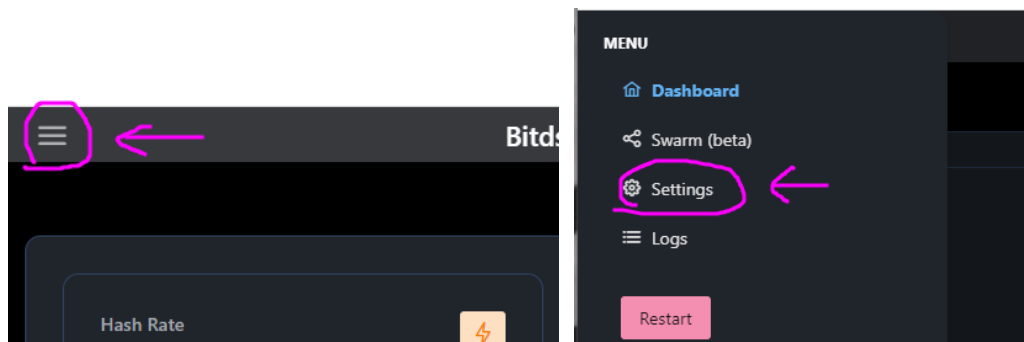
2: A hotspot of bitdisk_xxx will be automatically created by default. A prompt will appear on the screen, please connect to bitdisk_xxx.

3: At this time, use your mobile phone to turn on wifi and select the bitdisk_xxx hotspot

4: After connecting to this hotspot, a window will usually pop up automatically. If it does not pop up, click on the hotspot name on the wifi interface of your mobile phone.

(Note: If the mobile phone turns on the smart network selection and prompts that it cannot automatically switch to the Internet, be sure to click not to switch, or manually turn off the smart network selection)

5: Click the three bars on the left side of the pop-up window and select setting to enter the setting.



6: Modify the wifi name and wifi password, and fill in your wallet address as stratum user. Then scroll down the page

Settings

Hostname:
bitdisk

WiFi Name:
你的wifi名
Do not include '-', '_' and Special character

WiFi Password:
....

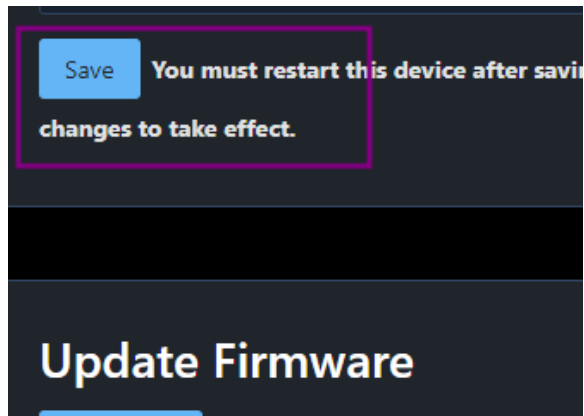
Stratum URL:
solo.vkbit.com
Do not include 'stratum+tcp://' and ports

Stratum Port:
3333

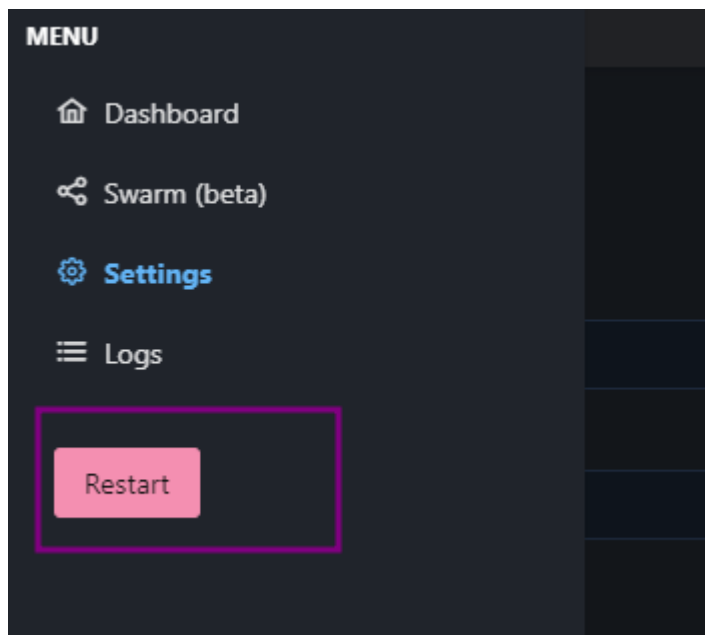
Stratum User:
你的btc钱包地址

Stratum Password:
x

7: Click save to save.



8: Click restart to restart. Setup is complete.



FAQ

1: How to use the web page to view and manage after the first configuration?

By default, the screen will flip once every 10 seconds. When flipping to the second bottle, you can see IP: xxx.xxx.xxx.xxx. This IP is the management IP. You can view and manage it by opening it with a browser.

2: How to check the computing power of the default pool?

Open: <https://vkbit.com/stats> Enter your wallet address in the upper right corner to view

3: What should I do if the first time I set it up, a white screen pops up, a black screen, or no pop-up window after connecting to the hotspot?

Follow these steps:

①: Place the motherboard on the ground, do not place it on electrical appliances, and do not place it next to electrical appliances.

②: Turn off the WiFi of the mobile phone. Note that it is the mobile phone, not the router.

③: Power off the mainboard, power on, and wait until the wifi connection fails 5 times and the hotspot name appears.

④: Hold the phone slightly closer to the board, turn on the Wi-Fi connection hotspot on the phone, pay attention to if the automatic switching pop-up pops up, click "No" not to switch. If there is no pop-up, it will automatically switch to Wi-Fi, that is, the smart network selection is turned on on the phone and needs to be turned off manually. .

⑤: You should be able to set it normally at this point. If you click the wrong settings many times and the settings are wrong, resulting in the setting page being unable to open, you can also follow this step. If you make multiple settings errors, you must first turn off the mobile phone's wifi and turn it on again. After actual testing, conflicts with the same name will occur, so you need to turn it on again.

4: The wifi name and password are correct, but the wifi cannot be connected. The wap2 encryption method is supported by default. Please log in to the router to confirm the encryption method. The wifi name cannot have special characters, such as "-". After actual testing, there is a probability that the connection cannot be made, or the connection cannot be made after restarting. WiFi only supports 2.4G frequency. Turning off dual-band integration will help stability.